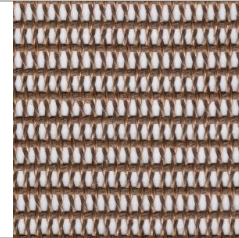


ESONE®

PTFE & Silicone Coated Fiberglass Fabric & Belt

TDS of STRONGER FIBERGLASS SERIE YS6016S



Product	Product Category	Coating
PTFE GLASS FABRIC	STRONGER FIBERGLASS SERIE	PTFE

Properties	Metric	Imperial
Standard width Please ask for other widths	1000, 1700, 1800, 1900, 2400, 2600, 2800, 3400, 3600, 3800 mm	39.5, 66.9, 70.9, 74.8, 94.5, 102.4, 110.2, 133.9, 141.7, 149.6 inches
Mesh Size	2 x 4 mm	0.0787 x 0.1575 mm
Tensile Strength	410 N/cm Warp	234 lbs/inches Warp
	590 N/cm Fill	337 lbs/inches Fill
Color	Brown	Brown
Temperature resistance	-73 to +260 °C	-100 to +500 °F

ESONE® open mesh series, PTFE coated mesh belt is coated with high quality PTFE resin, the basic material is woven open mesh fiberglass or aramid fabric (like Kevlar) or Nomax. The main applications is screen printing, drying industry, packaging industry, textile industry, wood processing industry and so on, which is used as heat resistant and non stick conveyor belt to transport materials through ovens. 2x4 mm PTFE open mesh fabric is FDA & LFGB certificated, can be used in direct contact with food.



ESONE® is a registered trademark owned by
 Jiangsu Eson New Material Co.,Ltd
 Taixing Youngsun FL-Plastics Co.,Ltd
 Western End of South Third Ring Road, Taixing, Jiangsu, China
 Tel: 0523-87590206 E-Mail: sales@chinayoungsun.com